



Slades Rise | | Enfield | EN2 7DW

Price Guide £350,000



Key features

- GROUND FLOOR PURPOSE BUILT GARDEN FLAT
- TWO DOUBLE BEDROOMS
- NEWLY REFURBISHED THROUGH OUT
- DIRECT ACCESS TO OWN GARDEN
- LONG LEASE
- EASY ACCESS TO OAKWOOD UNDERGROUND STATION
- FITTED KITCHEN
- MODERN BATHROOM SUITE
- WITHIN EASY REACH OF ENFIELD TOWN

Description

Welcome to this beautifully refurbished ground floor garden flat located on Slades Rise in Enfield. Spanning an impressive 687 square feet, this property offers a perfect blend of modern living and comfort.

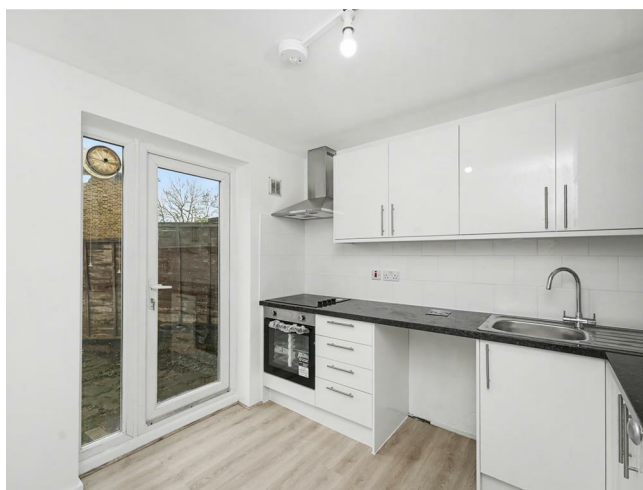
As you enter, you will find a spacious reception room that provides a warm and inviting atmosphere, ideal for both relaxation and entertaining. The flat boasts two generously sized double bedrooms, ensuring ample space for rest and privacy. The contemporary bathroom has been thoughtfully designed to meet all your needs.

One of the standout features of this property is the large garden, which you can access directly from the flat. This outdoor space is perfect for enjoying sunny days, hosting gatherings, or simply unwinding in your own private oasis.

Convenience is key, as the flat is situated within easy reach of Oakwood Underground station, making commuting a breeze. Additionally, the property is offered chain free, allowing for a smooth and straightforward purchase process. With a long lease in place, this flat presents an excellent opportunity for both first-time buyers and investors alike.

In summary, this charming flat on Slades Rise is a rare find, combining modern amenities with a desirable location. Don't miss the chance to make this delightful property your new home.

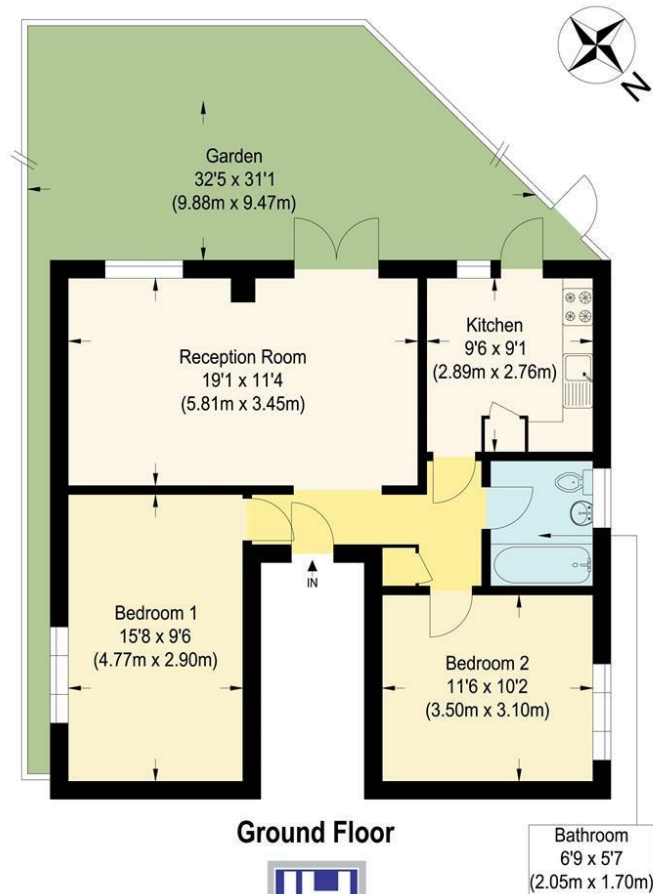
Directions



A recently refurbished, two bedroom ground floor flat, with direct access to own garden. The property provides good sized living accommodation, which includes modern kitchen & bathroom and a bright & spacious reception-dining room. The flat is made even more attractive by the long lease and no onward chain.

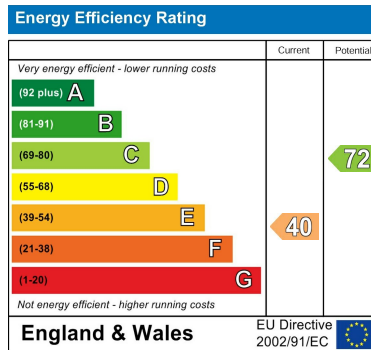


Floor plans



Rosana Court

Approximate Gross Internal Floor Area : 63.90 sq m / 687.81 sq ft
Illustration for identification purposes only, measurements are approximate, not to scale.



181 Chase Side
Enfield
Greater London
EN2 0PT
020 8367 4000
sales@james-hayward.com
James-Hayward.com